



Caledonian

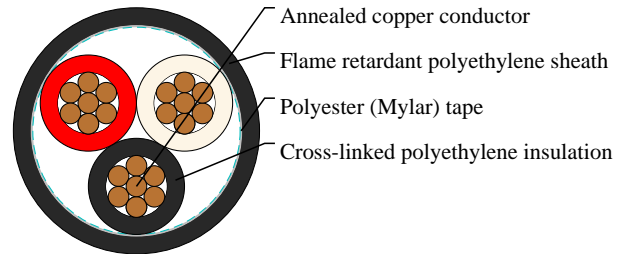
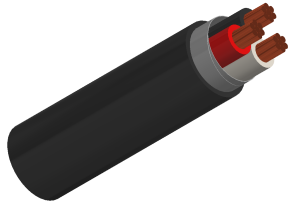
JIS Industrial Cables

www.caledonian-cables.com

marketing@caledonian-cables.com

JIS C 3401 Cables

CCE/F(EM-CCE) 3C22



APPLICATIONS

For supervisory electrical equipment, station control circuits, outdoor, suitable installation in dry or wet cable trenches.

CABLE CONSTRUCTION

Conductor: Circular or compacted circular stranded annealed copper wires

Separator: A proper separator may be applied to a conductor

Insulation: Cross-linked polyethylene

Filler: Non-hygroscopic material(optional)

Binding tape: Polyester (Mylar) tape (optional)

Sheath: Flame retardant polyethylene, Black color

Name Code:

C: For control C: Cross polythylene E: Polythylene /F: Flame retardant

COLOUR CODE

3 cores- Black, white and red

PHYSICAL AND THERMAL PROPERTIES

Maximum conductor temperature 90°C

Circuit voltage not exceeding 600 volts

Test voltage 2000 volts

DIMENSION AND PARAMETERS

| No. of Cores | Nominal Cross-sectional Area | No. and Dia. of Wires | Conductor Diameter | Nominal Insulation Thickness | Nominal Sheath Thickness | Approx. Overall Diameter | Approx. Weight | Max. DC Resistance at 20°C |
|--------------|------------------------------|-----------------------|--------------------|------------------------------|--------------------------|--------------------------|----------------|----------------------------|
| | mm ² | no./mm | mm | mm | mm | mm | kg/km | Ω/km |
| 3 | 22 | 7/2 | 6 | 1.2 | 1.6 | 22 | 875 | 0.84 |